

## NWCA-28-2F-E

WR-28 to 2.4mm Female, Right angle

Features:  
\* Low VSWR

Applications:  
\* Wireless  
\* Transmitter  
\* Laboratory Test  
\* Radar

### Electrical

Frequency: 26.3–40GHz  
VSWR: 1.2 max.  
Impedance: 50Ω

### Mechanical

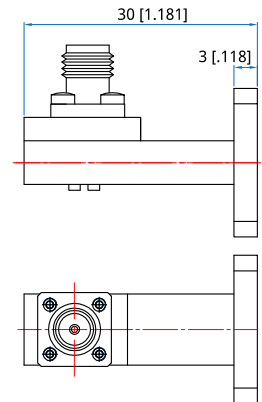
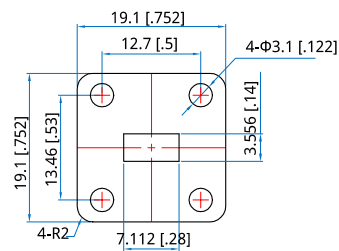
Length: 30mm  
1.181in  
RF Connectors: 2.4mm Female  
Interface: WR-28  
Flange: FBP320  
Material: Copper

### How To Order

**NWCA-28-2F-E**

Customization is available upon request.

### Outline Drawings



Unit: mm [in]

Tolerance: ±0.2mm [±0.008in]

