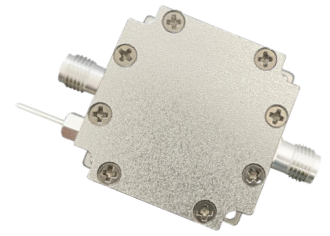


## NLA-600-4200-20-10

600~4200MHz, 20dB, 1dB

- |                                                             |                                                                          |
|-------------------------------------------------------------|--------------------------------------------------------------------------|
| <b>Features:</b><br>* Small Size<br>* Low Power Consumption | <b>Applications:</b><br>* Wireless<br>* Transmitter<br>* Laboratory Test |
|-------------------------------------------------------------|--------------------------------------------------------------------------|



### Electrical

Frequency:	600~4200MHz
Gain:	20dB typ.
Gain Flatness:	±2dB typ.
Noise Figure:	1dB typ.
Output Power (P1dB):	21dBm typ.
Input VSWR:	2 typ.
Output VSWR:	2 typ.
Voltage:	+5V DC
Impedance:	50Ω

### Absolute Maximum Ratings\*1

RF Input Power:	22dBm
Voltage:	+7V

[1] Permanent damage may occur if any of these limits are exceeded.

### Mechanical

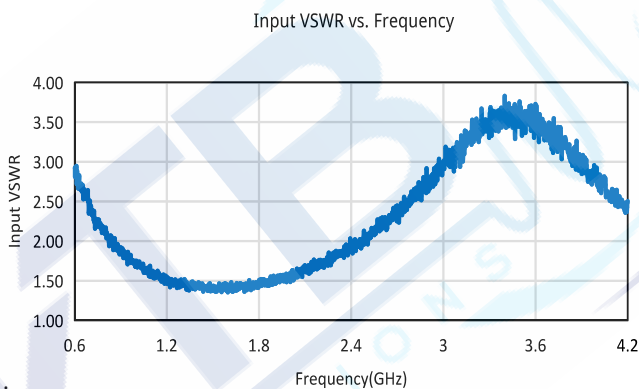
Size*2:	30*30*15mm 1.181*1.181*0.591in
RF Connectors:	SMA female
Power Supply Connectors:	Feed Through/Terminal Post
Mounting:	4-Φ2.2mm through-hole

[2] Exclude connectors.

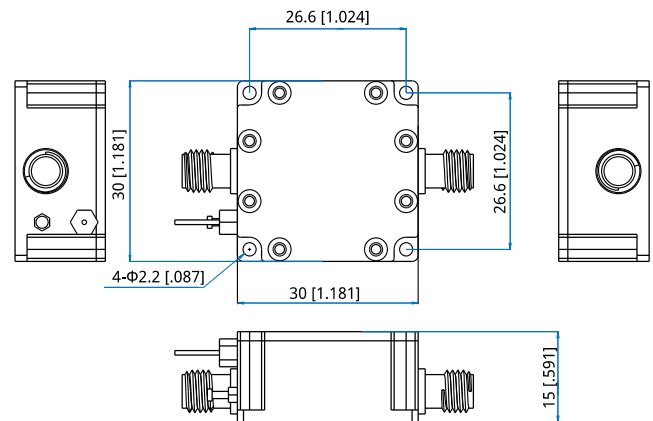
### Environmental

Operating Temperature:	-40~+85°C
Non-Operating Temperature:	-55~+125°C

### Typical Performance Curves



### Outline Drawings



Unit: mm [in]  
Tolerance: ±0.2mm [±0.008in]

### How To Order

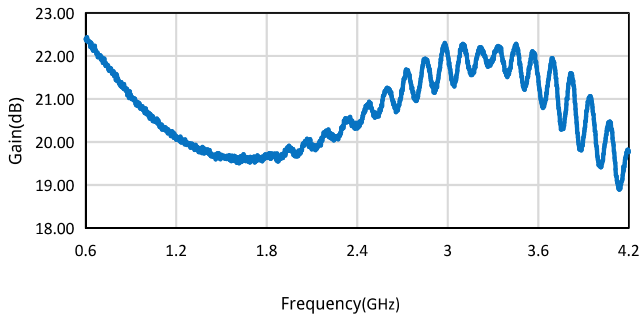
**NLA-600-4200-20-10**

Customization is available upon request.

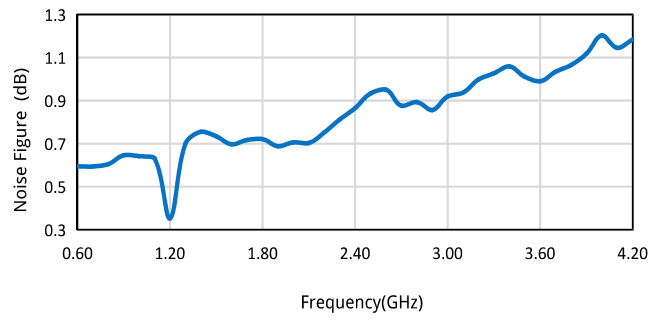


# Low Noise Amplifier

Gain vs. Frequency



Noise Figure vs. Frequency



P1dB vs. Frequency

