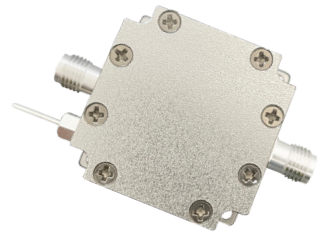


NLA-100-6000-16-10

100~6000MHz, 16dB, 1dB

- | | |
|---|--|
| Features:
* Small Size
* Low Power Consumption | Applications:
* Wireless
* Transmitter
* Laboratory Test |
|---|--|



Electrical

Frequency:	100~6000MHz
Gain:	16dB typ.
Gain Flatness:	±8dB typ.
Noise Figure:	1dB typ.
Output Power (P1dB):	21dBm typ.
Input VSWR:	2 typ.
Output VSWR:	2 typ.
Voltage:	+5V DC
Impedance:	50Ω

Absolute Maximum Ratings*1

RF Input Power:	22dBm
Voltage:	+7V

[1] Permanent damage may occur if any of these limits are exceeded.

Mechanical

Size*2:	30*30*15mm 1.181*1.181*0.591in
RF Connectors:	SMA female
Power Supply Connectors:	Feed Through/Terminal Post
Mounting:	4-Φ2.2mm through-hole

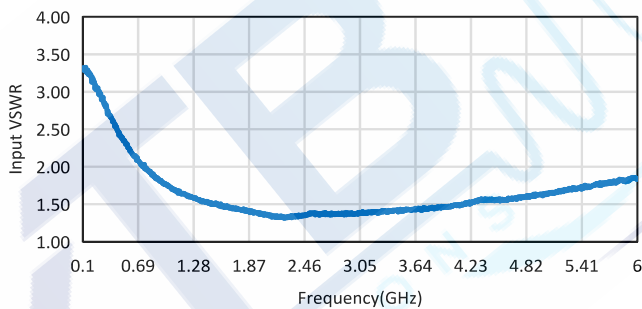
[2] Exclude connectors.

Environmental

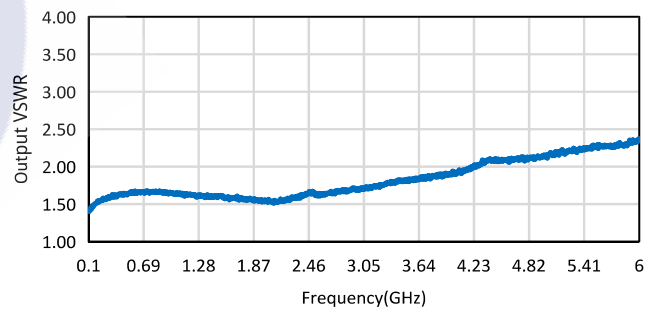
Operating Temperature: -40~+85°C

Typical Performance Curves

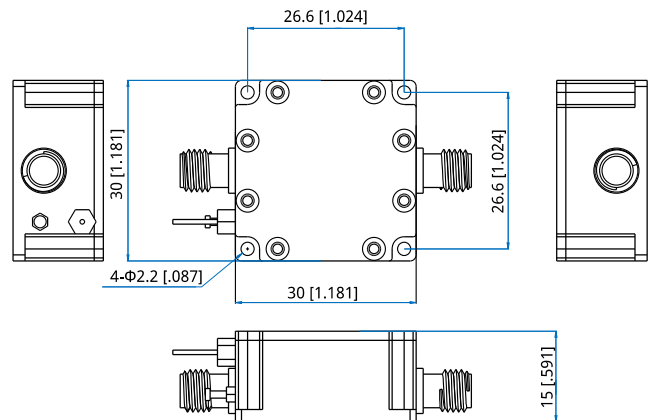
Input VSWR vs. Frequency



Output VSWR vs. Frequency



Outline Drawings



Unit: mm [in]
Tolerance: ±0.2mm [±0.008in]

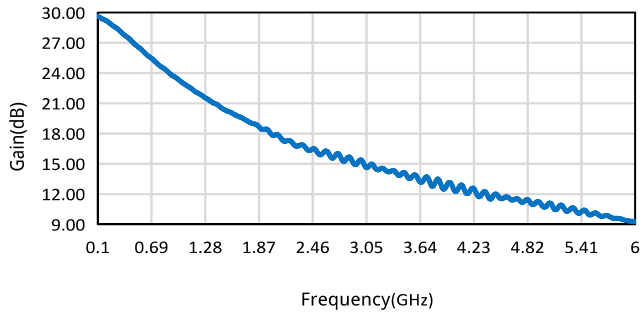
How To Order

NLA-100-6000-16-10

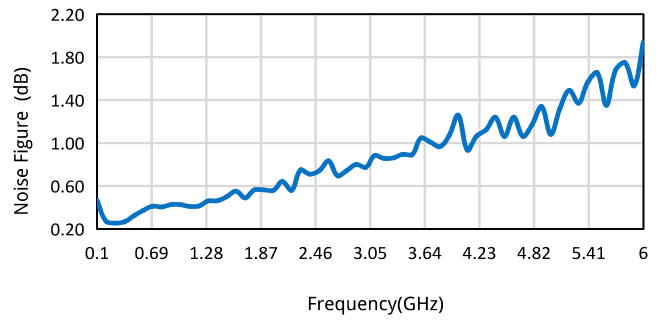
Customization is available upon request.

Low Noise Amplifier

Gain vs. Frequency



Noise Figure vs. Frequency



P1dB vs. Frequency

