

# kP4102 Programmable Noise Generator

Programmable Noise generators covering frequencies from 10MHz to 2GHz.



## kTB Programmable Noise Generator

kP4102 programmable noise generators offer a convenient, economical, rugged instrument ideal for all automated testing requiring noise.

Manual control via an intuitive touchscreen interface, remote control is via Ethernet. Frequency band covers 10MHz to 2GHz.

## General Specifications

<b>Model:</b>	kP4102
<b>Frequency:</b>	10MHz to 2GHz
<b>Power:</b>	0dBm
<b>Flatness:</b>	+/- 2.5dB
<b>Spectral Power:</b>	-93dBm/Hz
<b>Noise Attenuation:</b>	127.9dB in 0.1dB steps

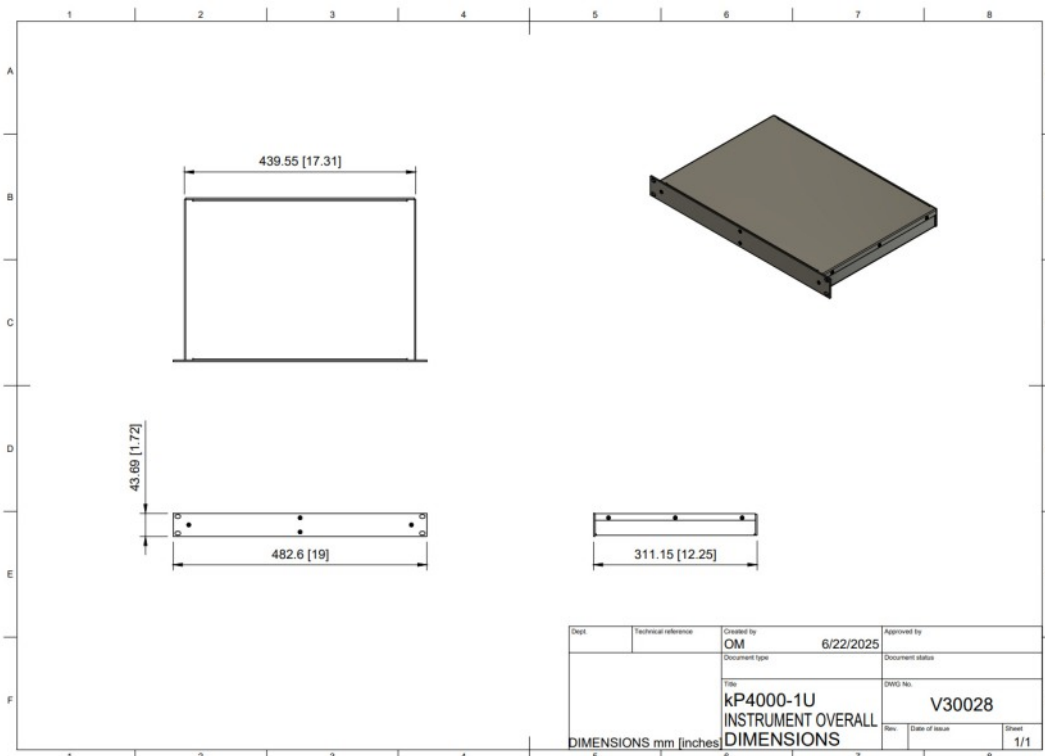
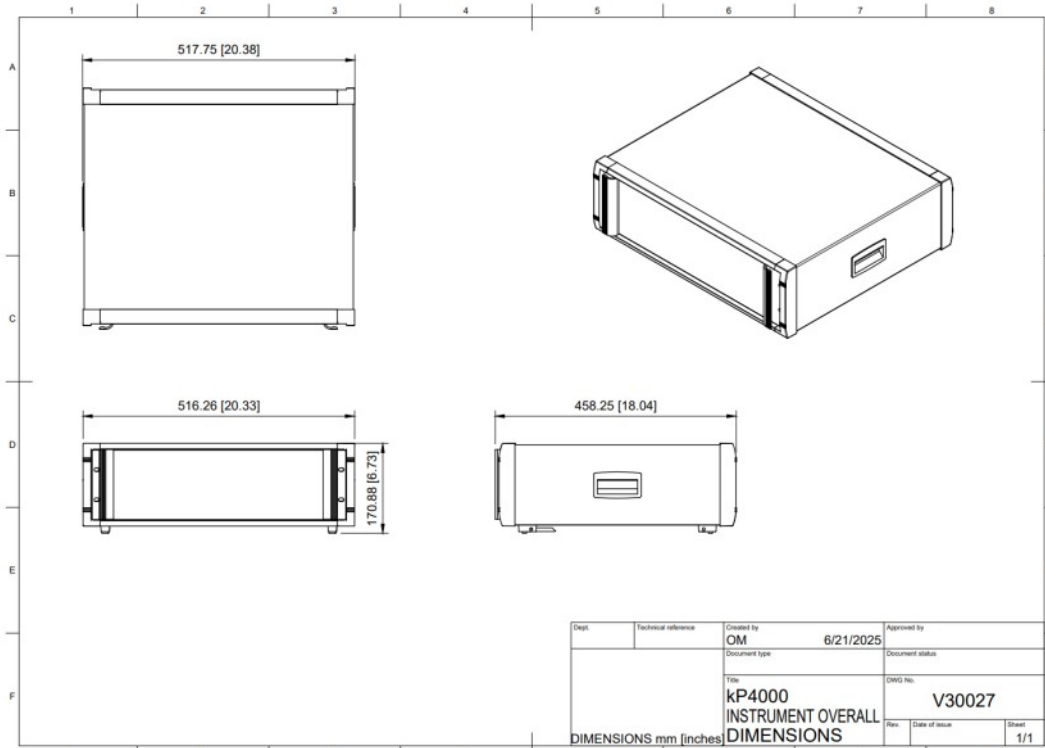
- Output White Gaussian noise
- Power 115/240VAC, 50/60 Hz
- Standard connectors SMA female
- Ethernet
- Touchscreen display
- 3U high enclosure (1U Optional)
- Operating Temperature: -10° to +65°C

## Options

- kP-B BNC RF Connector
- kP – N N Type RF connector
- kP – C Signal Combiner
- kP – SA Signal Attenuator
- kP-SFB Switched Filter Bank
- kP-1U 1U Chassis - Rackmount

## Applications Include

- BER Testing (Eb/No, C/N, SNR)
- Jamming
- Jitter tolerance testing
- GPS receiver testing
- EMI testing
- System and component test



**kP4102 Dimensions**

**KTBSOLUTIONS INC.**

1754 Technology Drive Suite 122  
San Jose CA 95110, USA

Tel.: +1 (650) 383-0079

E-mail: sales@ktbsolutions.com  
Web: www.ktbsolutions.com