

kD201 Noise Diodes

10 Hz to 18 Ghz



kTB Noise Diodes

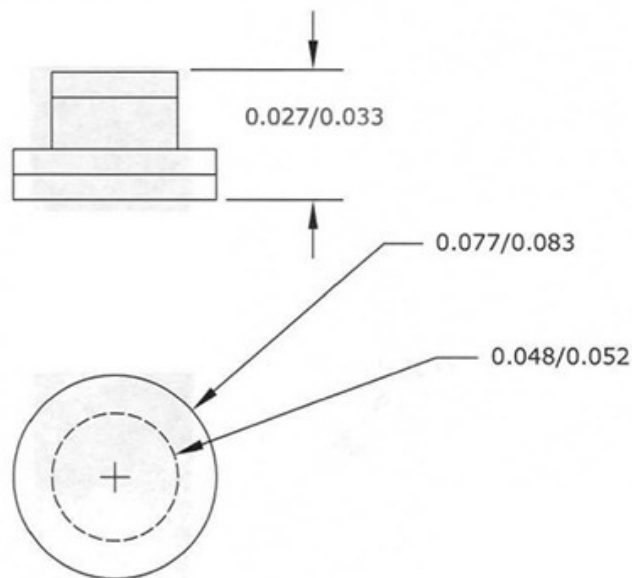
KTB'S noise diodes are the fundamental building blocks of all noise systems. They are hand-picked for performance characteristics that make them ideally suited to broadband noise generation with flat response.

All KTB noise diodes deliver symmetrical white Gaussian noise and flat output power versus frequency. The diodes are hermetically sealed and available in a wide variety of package styles. Special package configurations or screening processes are available upon request.

| Model | Frequency Range | Operating Voltage (v) | ENR (dB) | Impedance (ohm) | Bias (mA) |
|-------|-----------------|-----------------------|-----------|-----------------|----------------|
| KD201 | 10MHz to 18GHz | 6-12V | 30 | 50 | 10mA (typical) |

*Note: Assembly wirebondable for KD201

KD201



Features

- Custom electrical testing available upon request.
- Wide package variety with custom configurations.
- Can deliver symmetrical white Gaussian noise and flat output power versus frequency.
- Be used for RF and Microwave application
- Classified based on performance traits that improve their broadband noise output and produce a flat spectral response.