

# K1000 Series

## 10Hz to 18GHz Datasheet

---

### Amplified Noise Modules

The K1000 series modules produce white Gaussian noise up to 0 dBm covering frequencies up to 18GHz.

The high power modules are designed for secure communication and signal jamming, while the low power modules with high crest factor are used for signal impairment in BER, and Jitter applications.

Each module contains a hermetically packaged noise diode that has been pre-selected for special performance characteristics.

The standard module is designed for a 50Ω load impedance.





Model	Frequency Range	Output Characteristics			Bias
		Power (dbm)	Flatness (db)	Spectral Power (dBm/Hz)	
K1112	1MHz to 2GHz	0	± 2.5	-93	+15V @200mA
K1113	1MHz to 3GHz	0	±2.5	-95	+15V @200mA
K1116	10MHz to 6GHz	0	± 3	-98	+15V @250mA
K1120	2GHz to 18GHz	-10	± 3.5	-112	+15V @300mA
K1128	10MHz to 10GHz	-10	± 3.5	-110	+15V @250mA

## General Specifications

- Operating temperature -40° to +100° C
- Storage temperature -65° to +150° C
- Typical temperature coefficient 0.025 dB/° C
- Supply Voltage : All devices are internally regulated
- Output connector SMA female connector
- 50 Ohm impedance

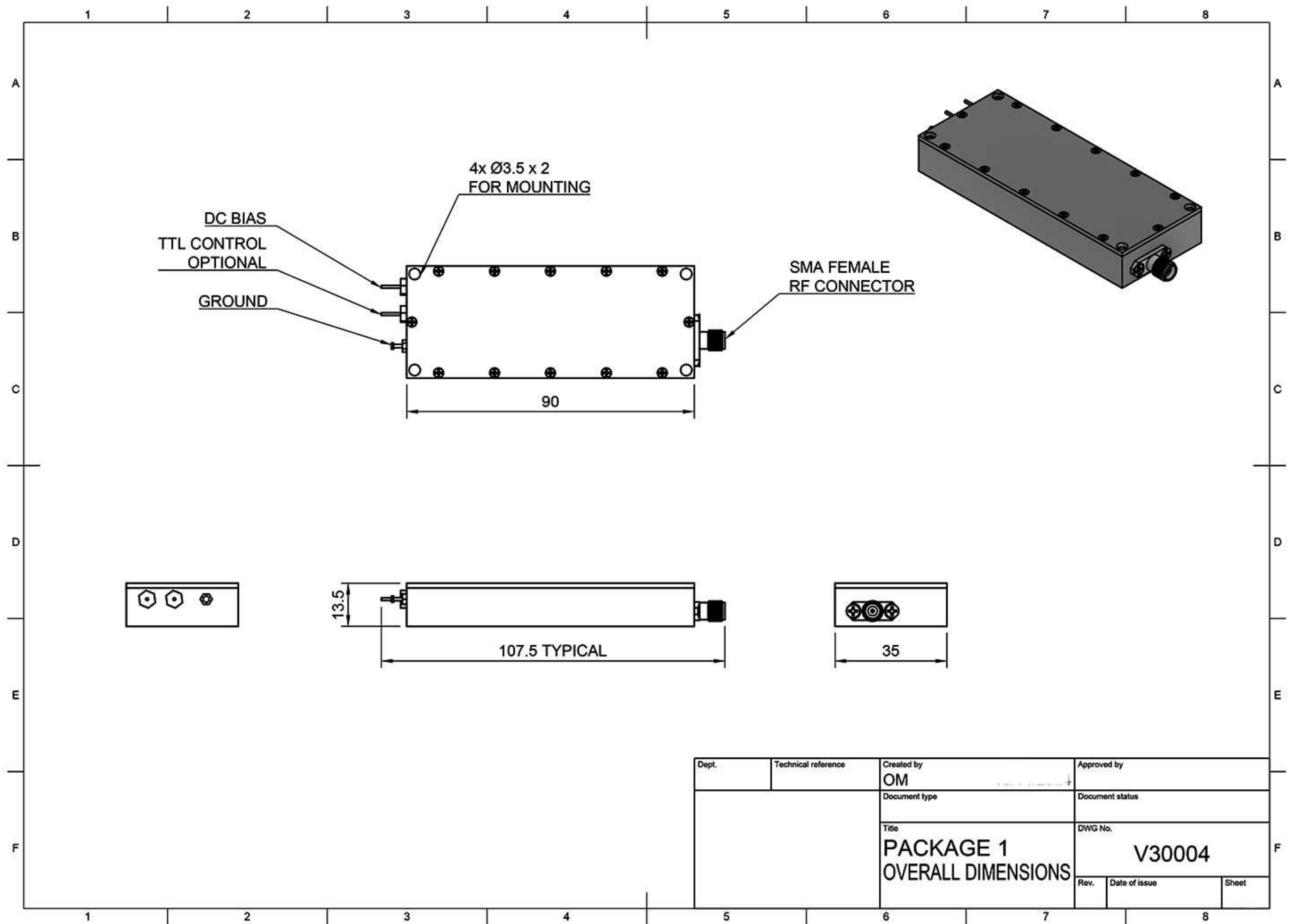
## Options

- TTLH – On/Off TTL control “High”
- TTLL – On/Off TTL control “Low”

## Applications

- CATV/HDTV
- Signal jamming
- Secure communications
- Jitter applications
- High Energy Applications
- Wireless test, built-in test equipment, dithering for increased dynamic range of A/D converters, and as an economical source for bit error rate testing.
- Signal impairment in BER





## K1000 Series Dimensions



### KTBSOLUTIONS INC.

1754 Technology DR STE 122

San Jose, CA, 95110, USA

Tel.: +1 650 686 1019

E-mail: sales@ktbsolutions.com

Web: www.ktbsolutions.com