

k2608 - High ENR Noise Sources

2GHz to 18GHz



Applications Include:

- Radar systems
- High NF device measurements
- Automated test equipment (ATE)

kTB High ENR Noise Sources

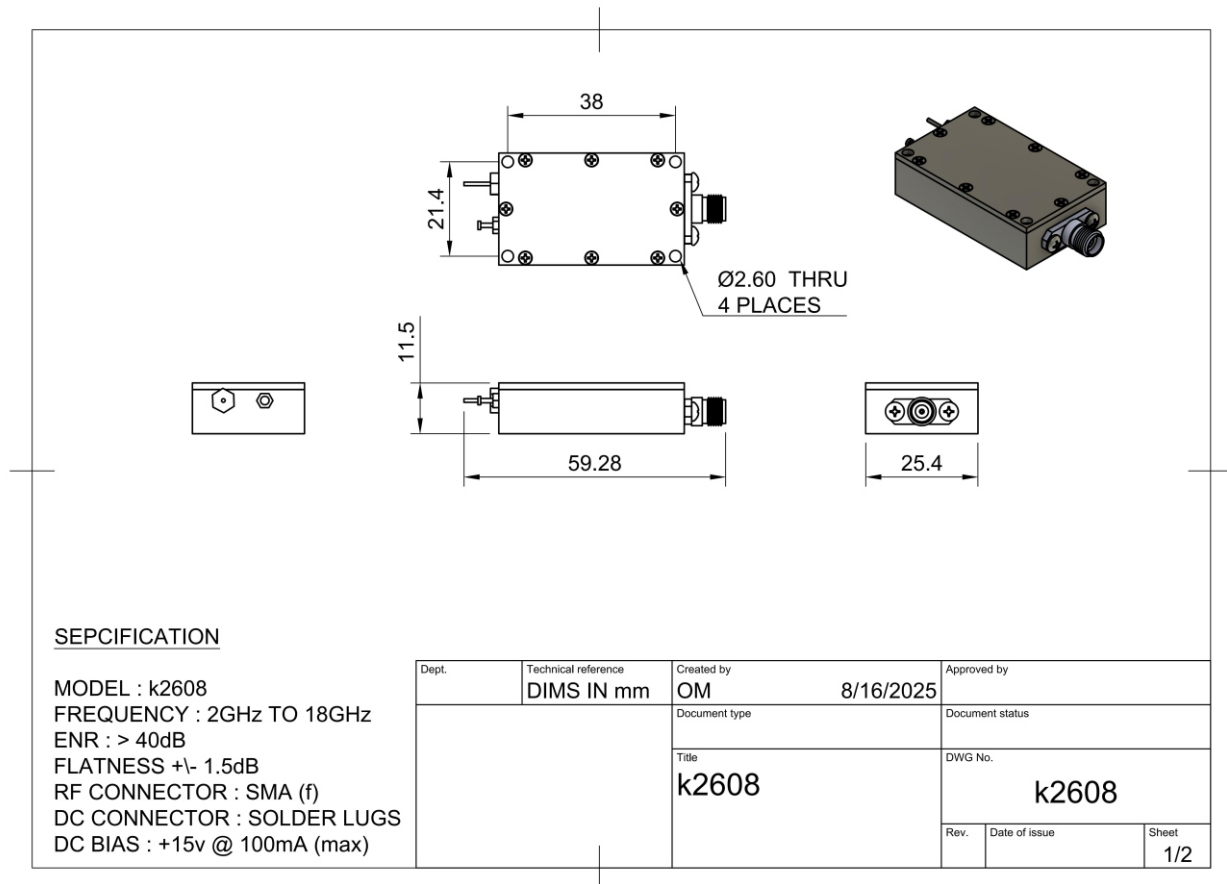
The KTB k2608 High ENR Noise Source offers a high ENR output over a wide frequency range.

The k2608 is an excellent choice for applications requiring high ENR, such as ATE, radiometers, and radar systems.

An SMA male connector is standard for the RF output and feedthroughs for bias input. SMA female is an option. Custom frequencies and flatness available. Contact the factory with your request.

General Specifications

Model	Frequency Range	ENR (dB)	Flatness (dB)	DC Bias	RF Connector
K2608	2GHz -18GHz	>40	± 1.5	+15v@100mA (max)	SMA(F)



k2608 Dimensions

KTB SOLUTIONS INC.

1754 Technology DR STE 122
 San Jose, CA, 95110, USA
 TeL.: +1 650 686 1019
 E-mail: sales@ktbsolutions.com
 Web: www.ktbsolutions.com