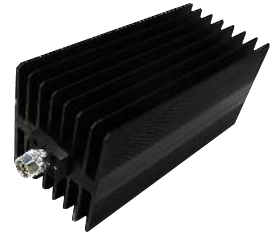


**NFA18K25**  
DC~18GHz, 250W

Features:  
\* Low VSWR  
\* High Attenuation Flatness

Applications:  
\* Wireless  
\* Transmitter  
\* Laboratory Test  
\* Radar



**Electrical**

Frequency:	DC~18GHz
Attenuation:	10~60dB
Impedance:	50Ω
Average Power*1:	250W@25°C max.
Peak Power:	5KW (5μS pulse width, 2.5% duty cycle) @DC~12.4GHz 1KW (5μS pulse width, 12.5% duty cycle) @18GHz

[1] Derated linearly to 12.5W@120°C.

**Mechanical**

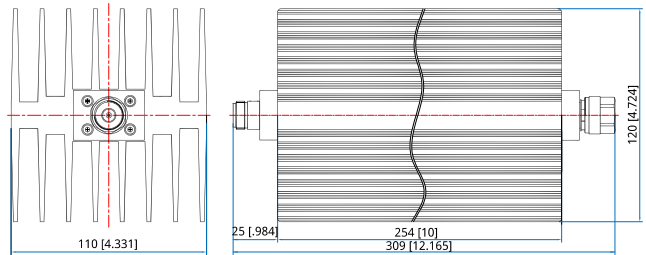
Size*2:	254*120*110mm 10*4.72*4.33in
RF Connectors:	N

[2] Exclude connectors.

**Environmental**

Temperature:	-55~+125°C
--------------	------------

**Outline Drawings**



Unit: mm [in]  
Tolerance: ±2mm [±0.08in]

**Attenuation Accuracy and VSWR**

Frequency (GHz)	Attenuation Accuracy (±dB) vs. Attenuation (dB)					VSWR (max.)
	10	20	30	40	50~60	
DC~4	0.7	0.7	0.8	0.9	0.9	1.2
DC~8	0.8	0.8	0.9	0.9	0.9	1.25
DC~12.4	2.5	0.9	1.0	1.1	1.1	1.35
DC~18	3	-	1.5	1.3	1.4	1.45

**How To Order**

**NFA18K25-X-Y-Z**

X: Frequency in GHz  
Y: Attenuation in dB  
Z: Connector type

Examples:

To order an attenuator, DC~18GHz, N male to N female, 20dB attenuation, specify NFA18K25-18-20-N.

Connector naming rules:  
N - N