

NELC-1F-1

1.0mm Female, DC~110GHz

Features:

- * Low VSWR

Applications:

- * Wireless
- * Radar
- * Instruments
- * Electronics

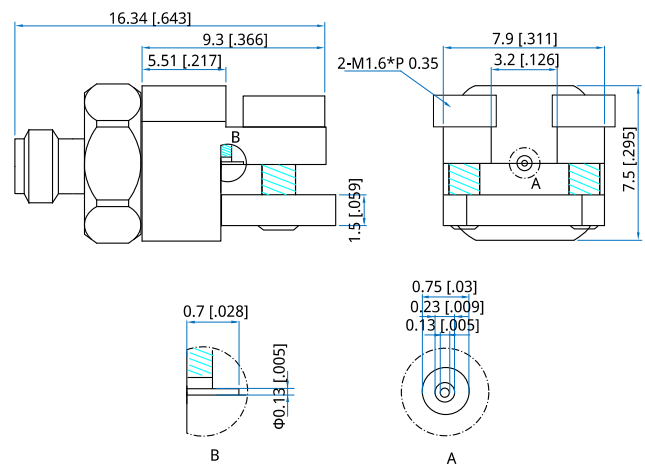
Electrical

Frequency:	DC~110GHz
VSWR:	2 max.
Impedance:	50Ω

Mechanical

RF Connector:	1.0mm Female
Outer Conductor:	Stainless steel
Inner Conductor:	Gold plated beryllium copper

Outline Drawings



Unit: mm [in]

Tolerance: ±0.2mm [±0.008in]

How To Order

NELC-1F-1

Customization is available upon request.