

NELC-1-1

1.0mm Male, DC~110GHz

Features:

- * Low VSWR

Applications:

- * Wireless
- * Radar
- * Instruments
- * Electronics

Electrical

Frequency: DC~110GHz

VSWR: 1.6 max.

Impedance: 50Ω

Mechanical

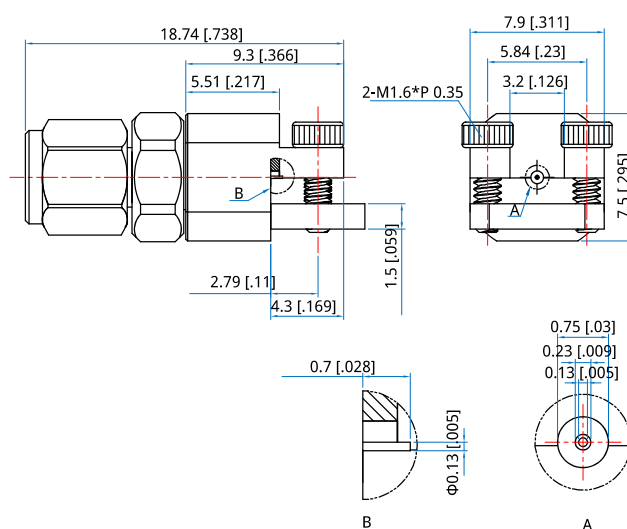
RF Connector: 1.0mm male

Outer Conductor: Stainless steel & nickel plated brass

Dielectric: PTFE

Inner Conductor: Gold plated beryllium copper

Outline Drawings



Unit: mm [in]

Tolerance: ±0.2mm [±0.008in]

How To Order

NELC-1-1

Customization is available upon request.