

## NCC5028B

### High Power, High Isolation

#### Features:

- \* High Power
- \* High Isolation
- \* Low Insertion Loss
- \* Low VSWR

#### Applications:

- \* Wireless
- \* Radar
- \* Laboratory Test

#### Description

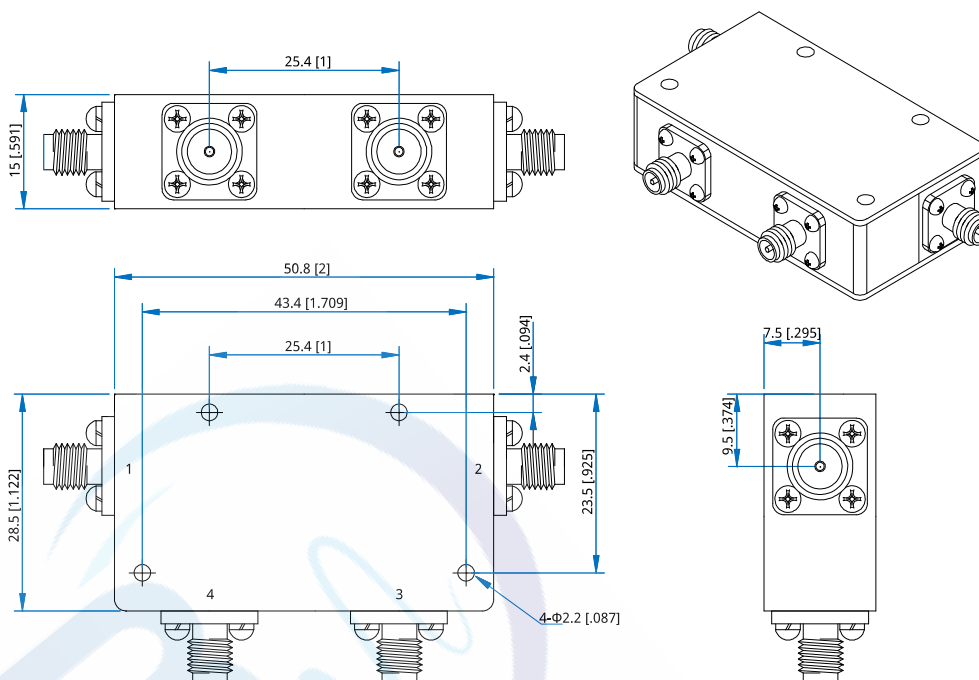
NCC5028B series Coaxial Circulators cover frequency range 2600~3200MHz. High power, high isolation and low insertion loss make it ideal for a lot of applications like amplifiers, transceivers, etc.

#### Specifications

Frequency (MHz)	Bandwidth (MHz)	IL (dB Max.)	Isolation (dB Min.)	VSWR (Max.)	Average Power* <sup>1</sup> (W)	Connector	Temperature (°C)
2600~3200	600	1	35	1.35	100	SMA	-40~+75

[1] The connector is SMA, and the maximum average power can only reach 100W

#### Outline Drawings



Unit: mm [inch]

Tolerance: ±0.2mm [±0.008in]

#### Mechanical

Size<sup>\*2</sup>: 50.8\*28.5\*15mm

2\*1.122\*0.591in

Mounting: 4-Φ2.2mm through-hole

[2] Exclude connectors

#### Connector Naming Rules:

S - SMA Female

#### Direction Naming Rules:

1 - Clockwise

2 - Anticlockwise



## Coaxial Circulators

### How To Order

#### **NCC5028B-V-W-X-Y-Z**

V: Start frequency in MHz

W: Stop frequency in MHz

X: Average power in W

Y: Connector type

Z: Direction type

#### Examples:

To order a NCC5028B series Circulator, 2600~3200MHz, 100W, SMA female, Clockwise, specify NCC5028B-2600~3200-K1-S-1.

Customization is available upon request.

