

# **NCX-FB-086-1** MMCX Female

Features:  
\* Low VSWR

Applications:  
\* Wireless  
\* Radar  
\* Instruments  
\* Electronics

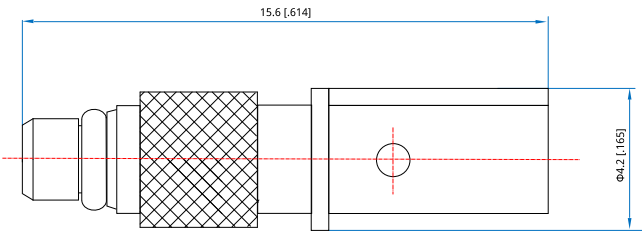
## **Electrical**

Frequency:	DC~3GHz
VSWR:	1.2 max.
Impedance of Dielectric:	5000MΩ min.
Voltage Withstand:	500V DC min
Impedance:	50Ω

## **Mechanical**

RF Connector:	MMCX Female
Mating Cable:	NH280, ND086, NE086, RG316, RG316D
Outer Conductor:	Gold plated brass
Dielectric:	PTFE
Innerr Conductor:	Gold plated brass

## **Outline Drawings**



Unit: mm [in]  
Tolerance: ±0.2mm [±0.008in]

## **How To Order** **NCX-FB-086-1**

Customization is available upon request.