

## NCS-FCB-R600-1

### SMA Female, Crimp

Features:  
\* Low VSWR

Applications:  
\* Wireless  
\* Radar  
\* Instruments  
\* Electronics



#### Electrical

Frequency:	DC~6GHz
VSWR:	1.25 max.
Impedance of Dielectric:	5000MΩ min.
Voltage Withstand:	1000V DC min.
Impedance:	50Ω

#### Mechanical

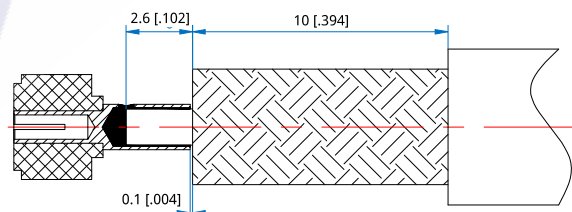
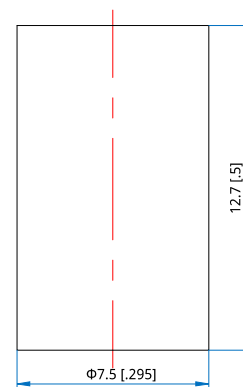
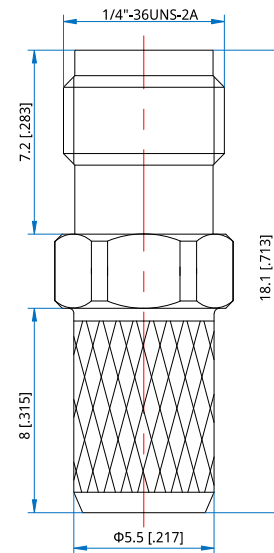
RF Connector:	SMA Female
Mating Cable:	NR600, NR600U
Outer Conductor:	Brass

#### How To Order

**NCS-FCB-R600-1**

Customization is available upon request.

#### Outline Drawings



Unit: mm [in]

Tolerance: ±0.2mm [±0.008in]