

NC7-MB-B1500-1

7/16 DIN Male

Features:
* Low VSWR

Applications:
* Wireless
* Radar
* Instruments
* Electronics

Electrical

Frequency: DC~6GHz
VSWR: 1.4 max.
Impedance: 50Ω

Mechanical

RF Connector: 7/16 DIN male
Mating Cable: NB1500
Outer Conductor: Ternary alloy plated brass
Dielectric: PTFE
Inner Conductor: Silver plated brass

Environmental

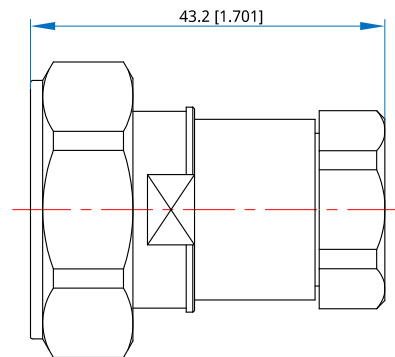
Temperature: -55~+125°C

How To Order

NC7-MB-B1500-1

Customization is available upon request.

Outline Drawings



Unit: mm [in]

Tolerance: $\pm 0.2\text{mm}$ [$\pm 0.008\text{in}$]