

## NBF-9250-10750-60

9.25~10.75GHz, 60dBc

**Features:**

- \* High Stopband Rejection
- \* Small Size

**Applications:**

- \* Telecom
- \* Laboratory Test
- \* Receivers
- \* Instrumentation

### Electrical

Passband:	9.25~10.75GHz
Passband Insertion Loss:	1.2dB max.
VSWR:	1.7 max.
Stopband Attenuation:	60dBc@8.9GHz min. 60dBc@11.1GHz min.
Average Power:	1W
Peak Power:	2W

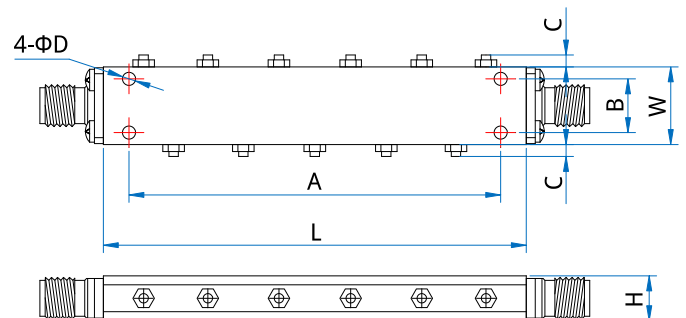
### Mechanical

RF Connectors:	SMA Female
Mounting:	4*Φ2.2mm through-hole

### Environmental

Operating Temperature:	-40~+70°C
Non-operating Temperature:	-55~+85°C

### Outline Drawings



Size	L	W	H	A	B	C	D
mm	102	14	11	93.8	10.8	2	2.2
in	4.016	0.551	0.433	3.693	0.425	0.079	0.087

Unit: mm [in]

Tolerance: ±0.2mm [±0.008in]

### How To Order

**NBF-9250-10750-60**

Customization is available upon request.