

NCS-FL4G-M

SMA Connector, DC~26.5GHz

Features:
* Low VSWR

Applications:
* Wireless
* Radar
* Instruments
* Electronics

Electrical

Frequency:	DC~26.5GHz
VSWR:	1.15 max.
Impedance of Dielectric:	5000MΩ min.
Impedance of Inner Conductor:	3mΩ max.
Impedance of Outer Conductor:	2mΩ max.
Voltage Withstand:	1000V DC
Impedance:	50Ω

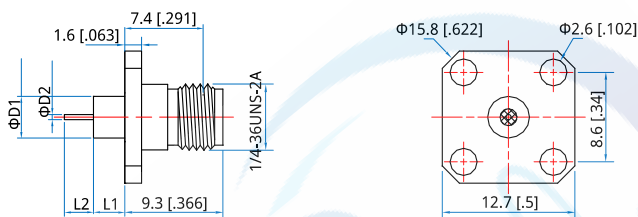
Mechanical

RF Connector:	SMA Female
Mating Life Cycle:	500 cycles
Outer Conductor:	Passivated SUS303 Stainless Steel
Dielectric:	PEI & PTFE
Inner Conductor:	Gold Plated Beryllium Copper

Environmental

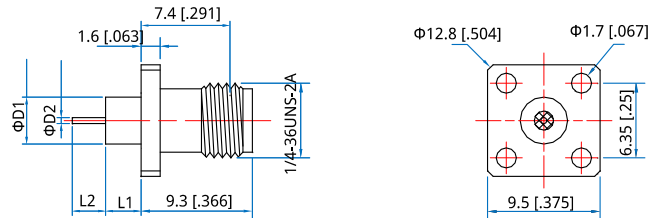
Temperature: -55~+165°C

Outline Drawings

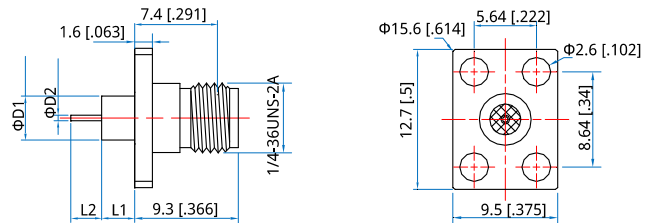


Part Number	ΦD1	ΦD2	L1	L2
NCS-FL4G-M80-01	4 [158]	0.8 [031]	4 [158]	2 [079]
NCS-FL4G-M38-02	4 [158]	0.38 [015]	3 [118]	2 [079]
NCS-FL4G-M38-03	4 [158]	0.38 [015]	3 [118]	3 [118]
NCS-FL4G-M38-04	4 [158]	0.38 [015]	3 [118]	0.4 [016]

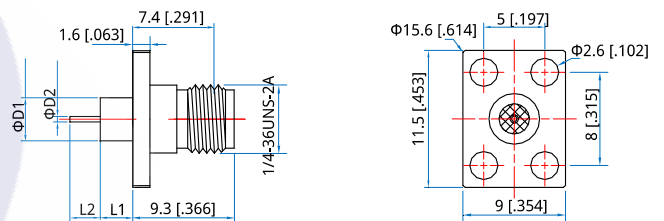
Unit: mm [in]
Tolerance: ±0.2mm [±0.008in]



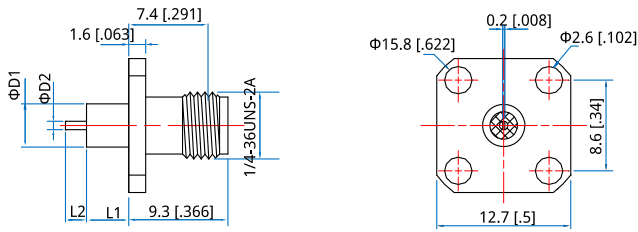
Part Number	ΦD1	ΦD2	L1	L2
NCS-FL4G-M80-05	4 [158]	0.8 [031]	4 [158]	2 [079]
NCS-FL4G-M38-06	4 [158]	0.38 [015]	3 [118]	2 [079]
NCS-FL4G-M38-07	4 [158]	0.38 [015]	3 [118]	3 [118]
NCS-FL4G-M38-08	4 [158]	0.38 [015]	3 [118]	0.4 [016]



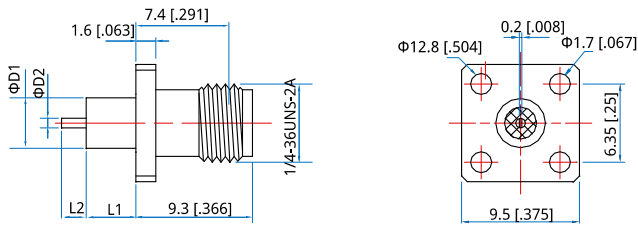
Part Number	ΦD1	ΦD2	L1	L2
NCS-FL4G-M80-09	4 [158]	0.8 [031]	4 [158]	2 [079]
NCS-FL4G-M38-10	4 [158]	0.38 [015]	3 [118]	2 [079]
NCS-FL4G-M38-11	4 [158]	0.38 [015]	3 [118]	3 [118]
NCS-FL4G-M38-12	4 [158]	0.38 [015]	3 [118]	0.4 [016]



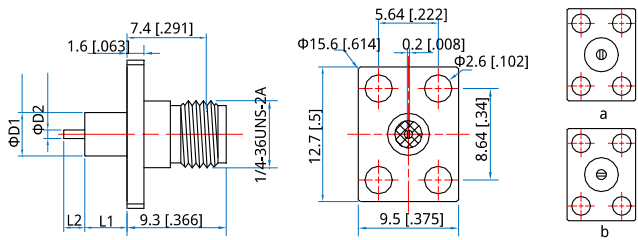
Part Number	ΦD1	ΦD2	L1	L2
NCS-FL4G-M80-13	4 [158]	0.8 [031]	4 [158]	2 [079]
NCS-FL4G-M38-14	4 [158]	0.38 [015]	3 [118]	2 [079]
NCS-FL4G-M38-15	4 [158]	0.38 [015]	3 [118]	3 [118]
NCS-FL4G-M38-16	4 [158]	0.38 [015]	3 [118]	0.4 [016]



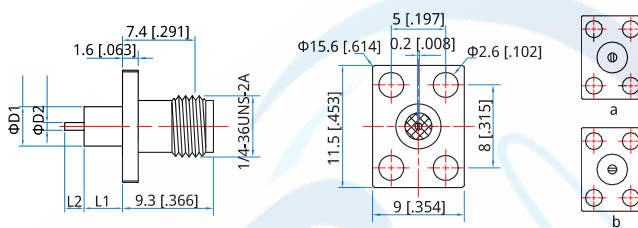
Part Number	ΦD1	ΦD2	L1	L2
NCS-FL4G-M100-17	6 [2.36]	1 [0.039]	4 [1.58]	1.5 [0.059]
NCS-FL4G-M80-18	4 [1.58]	0.8 [0.031]	4 [1.58]	1.5 [0.059]



Part Number	ΦD1	ΦD2	L1	L2
NCS-FL4G-M80-19	4 [1.58]	0.8 [0.031]	4 [1.58]	1.5 [0.059]



Part Number	ΦD1	ΦD2	L1	L2	
NCS-FL4G-M80-20	4 [1.58]	0.8 [0.031]	4 [1.58]	1.5 [0.059]	a
NCS-FL4G-M80-21	4 [1.58]	0.8 [0.031]	4 [1.58]	1.5 [0.059]	b



Part Number	ΦD1	ΦD2	L1	L2	
NCS-FL4G-M80-22	4 [1.58]	0.8 [0.031]	4 [1.58]	1.5 [0.059]	a
NCS-FL4G-M80-23	4 [1.58]	0.8 [0.031]	4 [1.58]	1.5 [0.059]	b