

## NCPF-MB-M38

SMP Connector, DC~40GHz

Features:  
\* Low VSWR

Applications:  
\* Wireless  
\* Radar  
\* Instruments  
\* Electronics

### Electrical

|                               |             |
|-------------------------------|-------------|
| Frequency:                    | DC~40GHz    |
| VSWR:                         | 1.3 max.    |
| Impedance of Dielectric:      | 5000MΩ min. |
| Impedance of Inner Conductor: | 6mΩ max.    |
| Impedance of Outer Conductor: | 2mΩ max.    |
| Voltage Withstand:            | 335V DC     |
| Impedance:                    | 50Ω         |

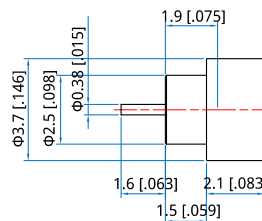
### Mechanical

|                  |  |
|------------------|--|
| RF Connector:    | SMP male   |
| Detent mode:     | Full Detent  |
| Outer Conductor: | Gold plated kovar material                                 |
| Dielectric:      | Glass  |
| Inner Conductor: | Gold plated kovar material or gold plated beryllium copper |

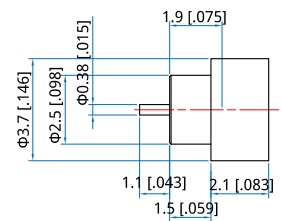
### Environmental

|              |            |
|--------------|------------|
| Temperature: | -55~+165°C |
|--------------|------------|

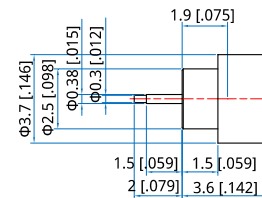
### Outline Drawings



Outline A



Outline B



Outline C

Unit: mm [in]  
Tolerance:  $\pm 0.2\text{mm}$  [ $\pm 0.008\text{in}$ ]

### How To Order

- [NCPF-MB-M38-01](#) - Outline A
- [NCPF-MB-M38-02](#) - Outline B
- [NCPF-MB-M38-03](#) - Outline C

Customization is available upon request.