

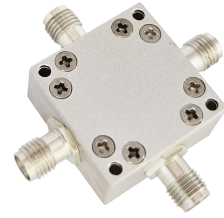
NIM-1750-5000
1.75~5GHz

Features:

- * Low Conversion Loss
- * High Isolation

Applications:

- * Wireless
- * Transceiver
- * Laboratory Test
- * Broadcast



Electrical

RF/LO Frequency:	1.75~5GHz
LO Input Power:	17dBm typ.
IF Frequency:	DC~2GHz
Conversion Loss:	10dB typ.
VSWR (IF):	1.5 typ.
VSWR (LO):	2 typ.
VSWR (RF):	3 typ.
Isolation (LO, RF):	38dB typ.
Isolation (LO, IF):	40dB typ.
Isolation (RF, IF):	30dB typ.

Absolute Maximum Ratings

RF/IF Input Power: 23dBm

Mechanical

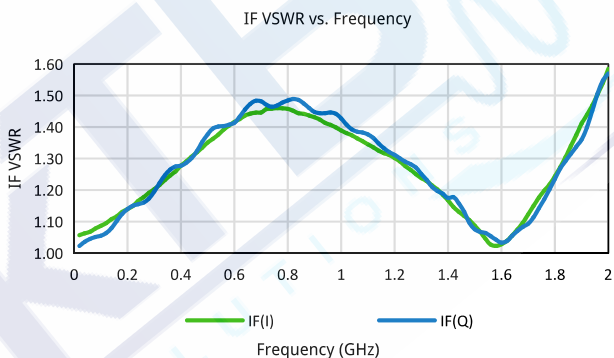
Size ^{*1} :	24*24*12mm 0.945*0.945*0.472in
Connectors:	SMA Female
Mounting:	4-Φ2.2mm through-hole

[1] Exclude connectors.

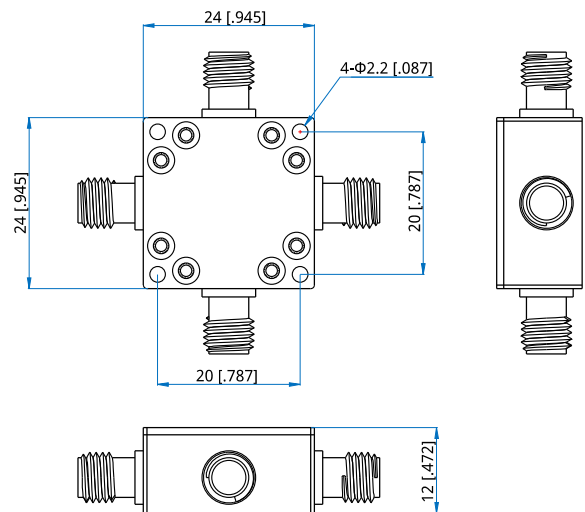
Environmental

Operating Temperature:	-40~+70°C
Non-operating Temperature:	-55~+100°C

Typical Performance Curves



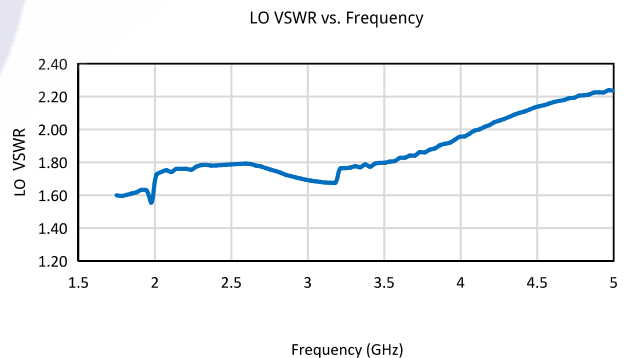
Outline Drawings



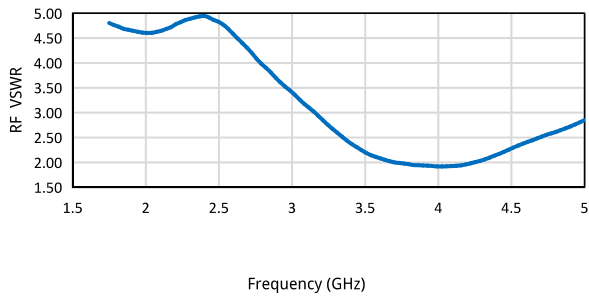
Unit: mm [in]
Tolerance: ±0.5mm [±0.02in]

How To Order
NIM-1750-5000

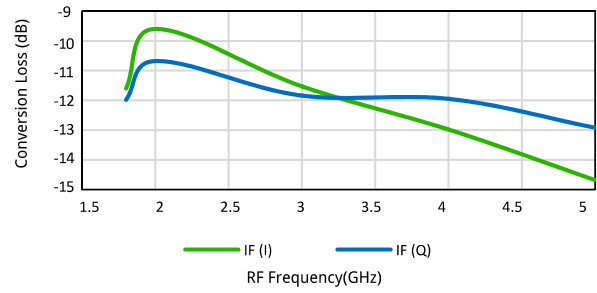
Customization is available upon request.



RF VSWR vs. Frequency

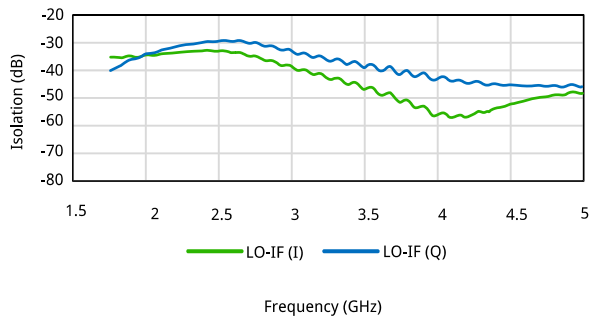


Downconversion Loss@ 100 MHz IF



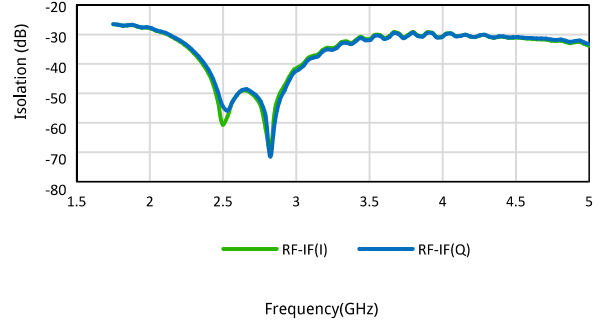
Frequency (GHz)

LO-IF Isolation vs Frequency



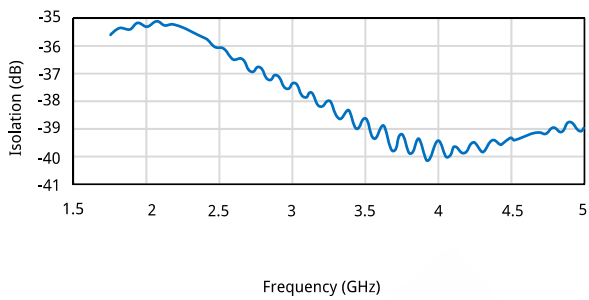
Frequency (GHz)

RF-IF Isolation vs. Frequency



Frequency (GHz)

RF-LO Isolation vs Frequency



Frequency (GHz)

