



## 8-Way Power Divider/Combiner

### NPD8-500-18000-20-S

8-Way, 0.5~18GHz

#### Features:

- \* Small Size
- \* Low Insertion Loss

#### Applications:

- \* Amplifiers
- \* Mixers
- \* Antennas
- \* Laboratory Test

#### Electrical

Frequency:	0.5~18GHz
Insertion Loss:	6dB max.
Input VSWR:	2.0 max.
Output VSWR:	1.6max.
Isolation:	14dB min.
Amplitude Balance:	0.8dB max.
Phase Balance:	$\pm 10^\circ$
Impedance:	50 $\Omega$
Average Power:	20W max. 1W max. as combiner

#### Mechanical

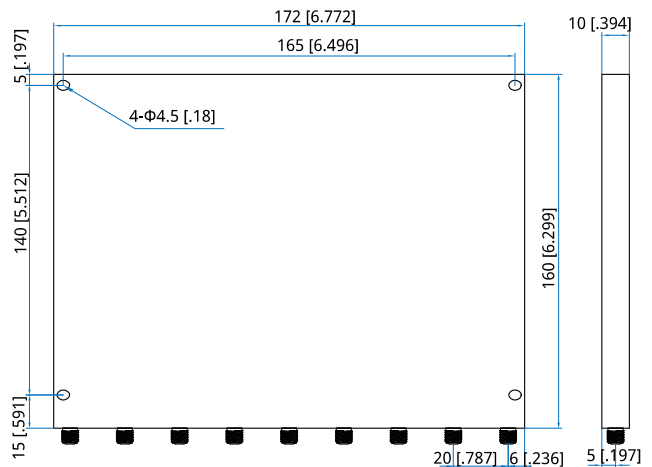
Size <sup>*1</sup> :	172*160*10mm 6.772*6.299*0.394in
Weight:	678g
Connectors:	SMA Female
Mounting:	4- $\Phi$ 4.5mm through-hole

[1] Exclude connectors.

#### Environmental

Operation Temperature: -45~+85°C

#### Outline Drawings



Unit: mm [in]

Tolerance:  $\pm 0.5$ mm [ $\pm 0.02$ in]

#### How To Order

[NPD8-500-18000-20-S](#)

Customization is available upon request.